



SYNQ[®]
AUDIO RESEARCH

About-SYNQ

Starting in 1961, as a supplier of sound and lighting products we decided in 2003 to make High-End Professional sound solutions accessible to a wider public with the introduction of our first professional DJ turntable XTRM-1.

A new audio brand was born: "Synq Audio Research" or "Synq"!

With the increased competitive offering in DJ material, and the shift to computer-based DJ'ing we decided to refocus Synq, in 2014, from a Professional High-End DJ scene brand to a Professional High-End PA brand.

The product development, which takes place in Belgium, focuses on users' comfort and reliability.

Each application has its specific needs, and that is exactly what our engineers bear in mind whenever they work out a new product and concept.

To maintain our edge over the competition we have made major development investments over the last years to improve the quality and innovation of Synq.

To improve the quality and serviceability we are also working more and more with European manufacturers such as Beyma, Faital Pro, ...

Backed up by a skilled, multi-lingual team and service department in the centre of Europe, Synq is your best partner for high-end professional sound equipment.

Our staff, trained by experience and action "in the field", is known for its efficiency and reactivity. No question without a reply, no problem without a solution!

Our after sales department is a role model for the business since its very beginning.

Synq is a registered trademark of BEGLEC NV, a Belgian sound & light distributor with over 60 years of experience.

Table of contents

Passive speakers:

SC-series.....	4
SQ-series.....	8

Active speakers:

SA-series.....	10
SQT-210.....	14

Amplifiers:

SE-series.....	16
----------------	----

Dante solutions:

Introduction.....	18
DBT-series.....	20
DBI-series.....	21
Main features.....	22
Technical details.....	23

SC-SERIES



The SYNQ SC-series is a series of High-Quality Coaxial speaker cabinets. In combination with the subwoofers from the SQ-series they are the ideal choice for all applications where sound quality, performance and ease of use are essential.

To guarantee the quality we decided to keep all processes - design, development, manufacturing and support - in Europe and only use components that meet the highest standards like: Beyma and Faital Pro drivers, Mundorf resistors, MKP capacitors, ... We decided to use neodymium drivers instead of the typical iron-ferrite magnets as they are very powerful and weigh much less.

The cabinets are made from 1st choice Baltic birch plywood and have a scratch free black textured Polyurea painting/finishing. They can be placed in different angles and mounted in different ways using optional brackets or optional omega clamps.

For safe transport of the SC-speakers and it's accessories we also offer optional, stackable, premium quality flight cases. The ingenious design of the cases allows testing of the speakers inside the case without the need to remove the speakers from the case.



SC-05

passive 5" coaxial speaker

Drivers : 5" LF-Ferrite, 0.75" voice coil
 Bandwidth : 120-21.000 Hz
 Directivity : 70° conical
 Max SPL : 119 dB
 Power : 250 Waes
 Recommended amplifier : 500 Wrms
 Impedance : 16 Ohm

Connection : Speakon in + out
 4-Pole Euroblock connector
 Switch to choose +- 1 or +- 2
 Mounting : - optional OMEGA CLAMP
 - mount for an optional microphone stand
 when using the included U-bracket

Dimensions (H x W x D) : 165 x 165 x 165 mm
 Weight (kg) : 4



SC-08

passive 8" coaxial speaker

Drivers : 8" LF-Neodymium, 1" voice coil
 Bandwidth : 70-20.000 Hz
 Directivity : 90° conical
 Max SPL : 123 dB
 Power : 300 Waes
 Recommended amplifier : 600 Wrms
 Impedance : 8 Ohm

Connection : Speakon in + out
 Switch to choose +- 1 or +- 2
 Mounting : optional OMEGA CLAMP
 optional bracket
 Dimensions (H x W x D) : 254 x 420 x 250 mm
 Weight (kg) : 8



SC-12

passive 12" coaxial speaker

Drivers : 12" LF-Neodymium, 1,75" voice coil
 Bandwidth : 60-20.000 Hz
 Directivity : 60° x 40°
 Max SPL : 128 dB
 Power : 400 Waes
 Recommended amplifier : 800 Wrms
 Impedance : 8 Ohm

Connection : 3 Speakons : 2 on left side + 1 on right side
 Switch to choose +- 1 or +- 2
 Mounting : optional bracket
 Dimensions (H x W x D) : 351 x 540 x 410 mm
 Weight (kg) : 16

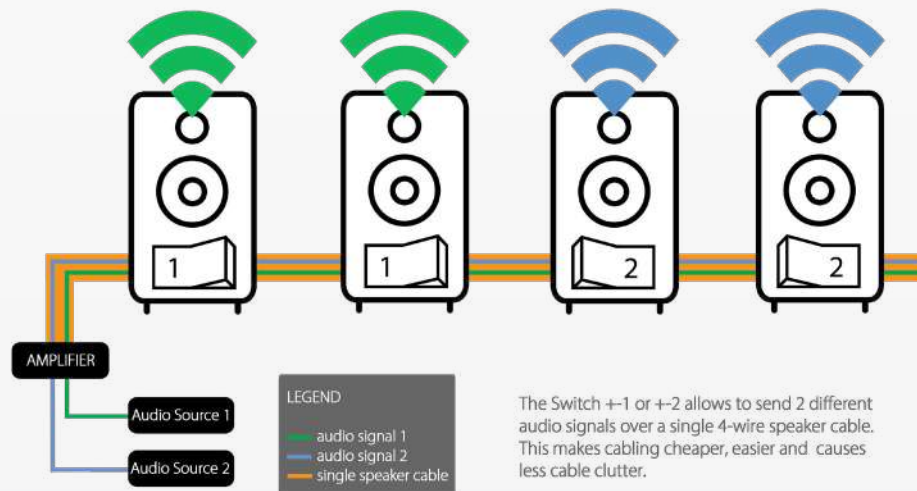


SC-15

passive 15" coaxial speaker

Drivers : 15" LF-Neodymium, 1,75" voice coil
 Bandwidth : 54-19.000 Hz
 Directivity : 60° x 40°
 Max SPL : 128 dB
 Power : 400 Waes
 Recommended amplifier : 800 Wrms
 Impedance : 8 Ohm

Connection : 3 Speakons : 2 on left side + 1 on right side
 Switch to choose +- 1 or +- 2
 Mounting : optional bracket
 Dimensions (H x W x D) : 368 x 580 x 447 mm
 Weight (kg) : 19





SC-SERIES Flightcases

Premium quality flight case "made in Europe"

Strong plywood with scratch free "HEXA" surface

Inside with specially adapted protection foam

Several recessed flip handles on all sides

Soft rubber castors, 2 with brakes

Versions :

CASE FOR 8x SC-05 : 80x60x28 (80x60x28 with castors), 25 kg

CASE FOR 4x SC-08 : 80x60x66 (80x60x80 with castors), 41 kg

CASE FOR 2x SC-12 : 80x60x66 (80x60x80 with castors), 32 kg

CASE FOR 8x SC-15 : 80x60x66 (80x60x80 with castors), 31 kg



SC-SERIES Brackets

Heavy duty U-bracket

Foldable design for compact for transport

Indexing plunger locks

Versions :

Bracket for SC-08

Bracket for SC-12

Bracket for SC-15



Artists : D-Block & S-te-Fan
 Photographer : JF Photographie
 Organisation : MPA Festival Dampicourt

SQ-SERIES



SQ-212

passive, double 12" subwoofer

Max SPL : 145 dB
 Low frequency limit : 35 Hz
 Directivity : 360°
 Dimensions (cm) : 60x60x40
 Weight (kg) : 38.2



SQ-215

passive, double 15" subwoofer

Max SPL : 145 dB
 Low frequency limit : 30 Hz
 Directivity : 360°
 Dimensions (cm) : 80x80x54
 Weight (kg) : 60



SQ-218

passive, double 18" subwoofer

Max SPL : 146 dB
 Low frequency limit : 25 Hz
 Directivity : 360°
 Dimensions (cm) : 118x80x56
 Weight (kg) : 80



SQ-SERIES Dollys

Custom-made dolly for quick and safe transport of the SQ-subwoofer.
 Special heavy-duty mechanism that protects the front of the subwoofer during transport.
 1st choice Baltic birch plywood with scratch free black textured polyurea finishing.
 4 heavy-duty 100mm "soft rubber" castors, 2 equipped with brakes.
 Several dollys can be stacked for easy storage.

Comparative Table

	SQ-212	SQ-215	SQ-218
Configuration	passive subwoofer	passive subwoofer	passive subwoofer
Drivers	2x 12"	2x 15"	2x 18"
	Neodymium drivers for more power and reduced weight		
AES Power	2400 Watt	2400 Watt	2400 Watt
Impedance	4 Ohm	4 Ohm	4 Ohm
Low frequency limit	35 Hz (-10dB)	30 Hz (-10dB)	25 Hz (-10dB)
Sensitivity SPL (1w/1m)	101 dB	101 dB	102 dB
Continuous SPL (1m)	135 dB	135 dB	136 dB
Maximum SPL @ 1m(*)	145 dB	145 dB	146 dB
	Finishing 1st choice Baltic birch plywood, scratch free black textured Polyurea finishing		
Dimensions (cm)	60x60x40	80x80x54	118x80x56
Weight (kg)	38.2	60	80

(*) peak level using pink noise, 10dB crest factor

SA-SERIES



The SYNQ SA Series represents the best-in-class loudspeaker for today's demanding audio professionals.

The perfect combination of elegant design, superior audio performance, functionality, simple and intuitive operation make the SA-series ideal for both touring and fixed installations.

- Up to 1500 Wrms Class-D amplifier module
- Deployment in either main PA or floor monitor position
- Acoustic Phase Linear design
- Perfect Square Wave reproduction
- Advanced DSP with factory EQ presets and user EQ presets can be saved and recalled for commonly used applications
- The enhanced power module delivers ample burst and continuous power for the loudspeaker's premium drivers
- Multi-function digital display for control and selection of loudspeaker functions including cross-over, EQ, delay and frequency contour
- Connections :
 - Input CH1 : combo XLR and 1/4" TRS + RCA with independent gain control
 - Input CH2 : combo XLR and 1/4" TRS
 - Output 1 : XLR mix out
 - Output 2 : CH1 throughput with XLR out
- Low-noise fan cooling
- Refined, professional appearance looks great in any application
- Rugged Plywood enclosure for long lasting durability (1st choice Baltic Birch)
- Ergonomic handles and a heavy-duty steel grille with fabric lining
- Scratch Free Black textured Polyurea finishing
- M10 fittings for flown applications
- An optional yoke mount accessory can be used for permanent installation

Coverage :

The specific horn design matches the coverage angle of the woofer at the cross-over frequency with the horn pattern to ensure uniform response across the coverage area.

Embedded techniques are also employed ensuring smooth power response from the loudspeaker.

The result is an extremely accurate loudspeaker that behaves well in a wide range of acoustic spaces with little or no equalization.

General Acoustic Design :

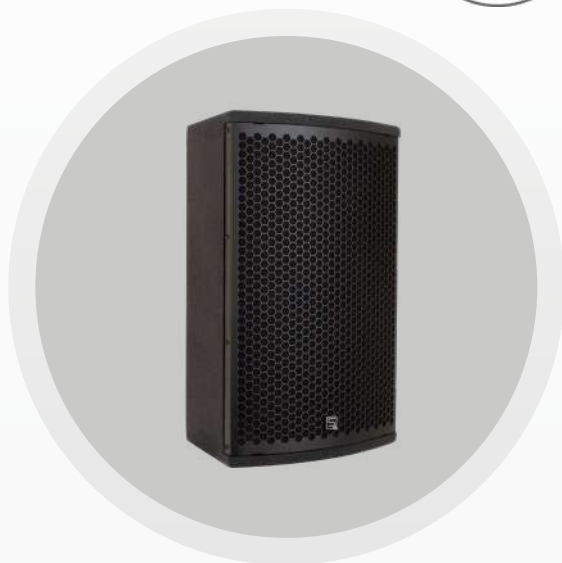
- Driver units chosen for maximum linearity in operation range with custom woofer design
- Constant Directivity (40*70 degrees) Horn loading for HF unit from RedCat
- DSP Audio Processing :
 - Acoustic Crossover point : 24 dB/oct Linkwitz-Riley filters
 - Frequency chosen were Directivity of woofer and horn tweeter match
 - Phase linear by using Phase correction FIR filter
 - Needle sharp impulse responses
 - Perfect Acoustic Square Wave reproduction
 - Dynamic EQ : All models show extended Low Frequency reproduction for low and moderate levels (<110dB)
- Above 110 dB : gradual reduction of Low Frequencies (<50 Hz) to protect woofer from mechanical overload
- Frequency equalisation : no more than +/- 1,5 dB difference between adjacent 1/20th octave bands, for ultimate High Fidelity sound reproduction
- Compressors limiting max Harmonic Distortion < 10% at maximum SPL
- Maximum Acoustic Harmonic Distortion : < 1% till SPL level -3 dB from maximum

Finite Impulse Response (FIR)

Complex waveforms like music have lots of harmonics with a phase relationship. With phase correction loudspeakers can reproduce this phase relationship.



SA-SERIES



SA-10

Self-powered, active 2-way, 10"

Max SPL : 127 dB
 Bandwidth : 50-25.000 Hz
 Directivity : 40°
 Amplifier (CLASS D) : RMS: 280 W, 100 W
 Dimensions (H x W x D) : 530x315x321 mm
 Weight (kg) : 15



SA-12

Self-powered, active 2-way, 12"

Max SPL : 129 dB
 Bandwidth : 41-25.000 Hz
 Directivity : 40°
 Amplifier (CLASS D) : RMS: 500 W, 150 W
 Dimensions (H x W x D) : 653x371x370 mm
 Weight (kg) : 20



SA-15

Self-powered, active 2-way, 15"

Max SPL : 131 dB
 Bandwidth : 36-25.000 Hz
 Directivity : 40°
 Amplifier (CLASS D) : RMS: 500 W, 150 W
 Dimensions (H x W x D) : 690x430x430 mm
 Weight (kg) : 25



SA-B15

Self-powered, bass reflex, 15"

LF Transducer : 381mm (15in) cone
 Frequency response (-6dB) : 29 – 101 Hz (deep mode)
 39 – 101 Hz (standard)
 Sensitivity (sine 500 Hz)(Sub : 50 Hz.) : -7 dB(U) 109 dB @ 1m 2pi
 Nominal Coverage Angle : 360 degrees
 Maximum Rated SPL (1) : 117/130 dB 1 meter
 Maximum Rated SPL (2) : 126/129 dB 1 meter
 Amplifier (CLASS D) : 1600 Wrms
 Dimensions (H x W x D) : 780x430x620 mm
 Weight (kg) : 40

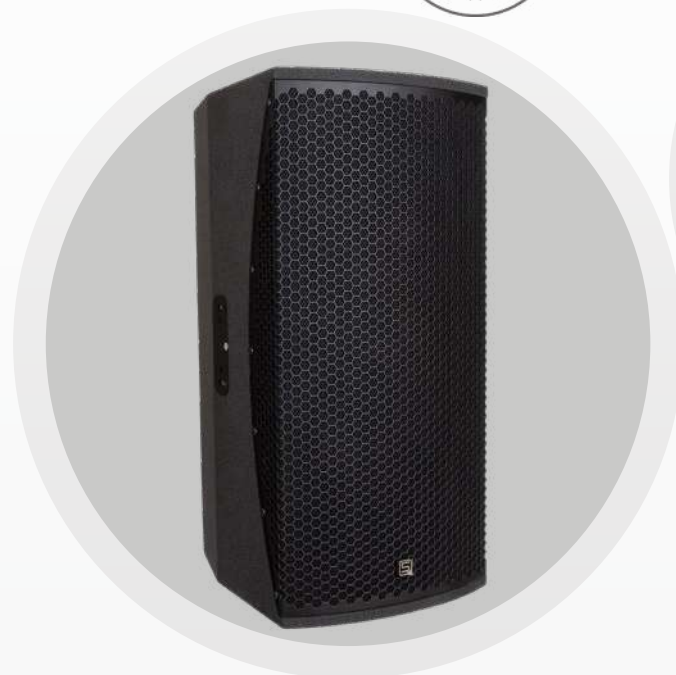
Comparative Table

	SA-10	SA-12	SA-15
Configuration	2 way active speaker	2 way active speaker	2 way active speaker
LF Transducer	254mm (10 in) cone	305mm (12 in) cone	381mm (15in) cone
HF Transducer	25.4mm (1 in) CD	25.4mm (1 in) CD	25.4mm (1 in) CD
Frequency response (-6dB)	50 Hz -25 kHz	41 Hz – 25 kHz	36 Hz – 25 kHz
Phase Linearity	200-20kHz(+/-15°)	200-20kHz(+/-15°)	200-20kHz(+/-15°)
Sensitivity (1)	-7 dB(U) 96,8 dB @ 1m Freefield	-7 dB(U) 97 dB @ 1m Freefield	-7 dB(U) 98dB @ 1m Freefield
Nominal Coverage Angle	+/- 40 degrees (-6 dB)	+/- 40 degrees (-6 dB)	+/- 40 degrees (-6 dB)
Maximum Rated SPL (2)	115/127 dB 1 meter	118/129 dB 1 meter	119/131 dB 1 meter
Maximum Rated SPL (3)	123/127 dB 1 meter	126/129 dB 1 meter	128/131 dB 1 meter
Amplifier (CLASS D)	RMS: 280 W, 100 W	RMS: 500 W, 150 W	RMS: 500 W, 150 W
Dimensions (H x W x D)	530x315x321 mm	653x371x370 mm	690x430x430 mm
Weight (kg)	15	20	25

- 1) Sine 500 Hz, Sub : 50 Hz
- 2) Program RMS/Peak SPL using Unclipped Pink noise, crest factor 13 dB
- 3) Burst Sine Wave 125 Hz (250 msec on)



SQT-210



Self-powered, active 2-way, double 10"

LF Transducer	2 x 10"
HF Transducer	1.4" B&C
Frequency response (-6dB)	40Hz-20kHz
Phase Linearity	200Hz-20kHz (+-15°)
Sensitivity	-7dBu /101dBspl/250 Hz./1m
Impedance	20kOhm
Nominal Coverage Angle	70° x 40° with rotatable horn
Maximum Rated SPL (1)	123/136 dB
Maximum Rated SPL (2)	133/135 dB
Amplifier (CLASS D)	RMS : 2200 W (LF), 800 W (HF)
Finishing	1st choice Baltic birch plyood
Dimensions (H x W x D)	700 x 330 x 400 mm
Weight (kg)	28kg

www.synq-audio.com



SE-SERIES

The SE-series of power amplifiers are unprecedented in terms of price / performance.

The sophisticated design of these lightweight CLASS-D amplifiers ensures excellent and powerful low-frequency reproduction combined with crystal clear and delicately balanced high frequencies.

Thanks to the big power reserve, excellent limiters and protections it can be used in all kinds of different applications such as discotheques, clubs, mobile audio, PA, rental, theater, ...

The extremely high efficiency, reduced power waste and very low heat dissipation are the main advantages of these compact amplifiers!

Space saving design for mobile applications.

They are designed with all the protections for professional use :

- Inaudible signal + current limiter
- Overload protection
- Short circuit current protection
- DC protection
- Thermal protection
- AC / VHF protection
- Soft start



SE-1100

Power output, stereo : 2x 300 Wrms @ 8 Ω (1)
2x 550 Wrms @ 4 Ω (1)
Power output, bridged : 1x 1100 Wrms @ 8 Ω (1)

Mono mode : yes
Power efficiency : > 90%
Freq. Resp; (+/-1dB) : 20-20000 Hz
Input sensitivity : 0,7 V / 1 V / 1,4 V
Input impedance unbalanced : 10 kΩ
Input impedance balanced : 20 kΩ
S/R ratio (A-Weighted) : > 103dB
Damping factor (5Hz-1kHz) : > 400
Slew Rate : 40V/uS
Amplifier class : D
Inputs : 2x Balanced XLR
Outputs : Speakon® compatible connectors
2x Balanced XLR link
Power supply : 200 > 240Vac / 50Hz
Power input : PowerCON® compatible connector
Dimensions : 48.2 x 6.6 x 21.5 cm (19"/1,5U)
Weight (kg) : 3,85

(1) 1kHz, THD+N<1%
(2) EIA 1kHz 40ms burst sine wave, THD+N<1%



SE-1800

Power output, stereo : 2x 600 Wrms @ 8 Ω (1)
2x 900 Wrms @ 4 Ω (1)
Power output, bridged : 1x 1800 Wrms @ 8 Ω (1)

Mono mode : yes
Power efficiency : > 90%
Freq. Resp; (+/-1dB) : 20-20000 Hz
Input sensitivity : 0,75V / 1,0V / 1,5 V
Input impedance unbalanced : 10 kΩ
Input impedance balanced : 20 kΩ
S/R ratio (A-Weighted) : > 100dB
Damping factor (5Hz-1kHz) : > 800
Slew Rate : 40V/uS
Amplifier class : TD
Inputs : 2x Balanced combo XLR + JACK 6,3
Outputs : Speakon® compatible connectors
Wired terminals
2x Balanced XLR link
Power supply : 200 > 240Vac / 50Hz
Power input : PowerCON® compatible connector
Dimensions : 48.2 x 8.8 x 36.5 cm (19"/2U)
Weight (kg) : 9,34



SE-3000

Power output, stereo : 2x 1000 Wrms @ 8 Ω (1)
2x 1500 Wrms @ 4 Ω (1)
Power output, bridged : 1x 3000 Wrms @ 8 Ω (1)

Mono mode : yes
Power efficiency : > 90%
Freq. Resp; (+/-1dB) : 20-20000 Hz
Input sensitivity : 0,75V / 1,0V / 1,5 V
Input impedance unbalanced : 10 kΩ
Input impedance balanced : 20 kΩ
S/R ratio (A-Weighted) : > 100dB
Damping factor (5Hz-1kHz) : > 800
Slew Rate : 40V/uS
Amplifier class : TD
Inputs : 2x Balanced combo XLR + JACK 6,3
Outputs : Speakon® compatible connectors
Wired terminals
2x Balanced XLR link
Power supply : 200 > 240Vac / 50Hz
Power input : PowerCON® compatible connector
Dimensions : 48.2 x 8.8 x 36.5 cm (19"/2U)
Weight (kg) : 10,06



About DANTE™

Dante™ advantages

- Uncompressed multi-channel audio over standard Ethernet networks
- No bulky snake cables !
- No more buzzing due to ground loops !
- Cheap CAT5E-cabling + standard Ethernet switches
- Plug & Play : auto discovery, no IP-addresses, no network knowledge required!
- Easy routing of audio signals ! (Free Dante™ Controller software)
- Extremely low latency : < 2 ms
- Virtual Sound Card : turns any Windows PC / MAC into a Dante™ audio device
- Up to 512 audio channels per GIGABIT network!
- Automatic discovery of all Dante™ devices on the network
- 1 Universal protocol : no compatibility problems !

Dante™ requirements

Currently not all audio equipment can talk Dante™-language.

The new SYNQ Dante™ I/O interfaces translate analog audio to and from Network Audio (Dante™).

Analog > Dante™ :

- Connect your MIC to the Dante™ network
- Connect your Guitar, audio player, ... to the Dante™ network

Dante™ > Analog :

- Connect the Dante™ network to your analog amplifier/active speaker
- Connect the Dante™ network to Recorder with analog input



DANTE™ is the NEW STANDARD for "Audio over IP" !
Light jockey's call it "Art-Net for audio" !

DANTE™ Example

Multiroom Install example using PoE

Room 1 :

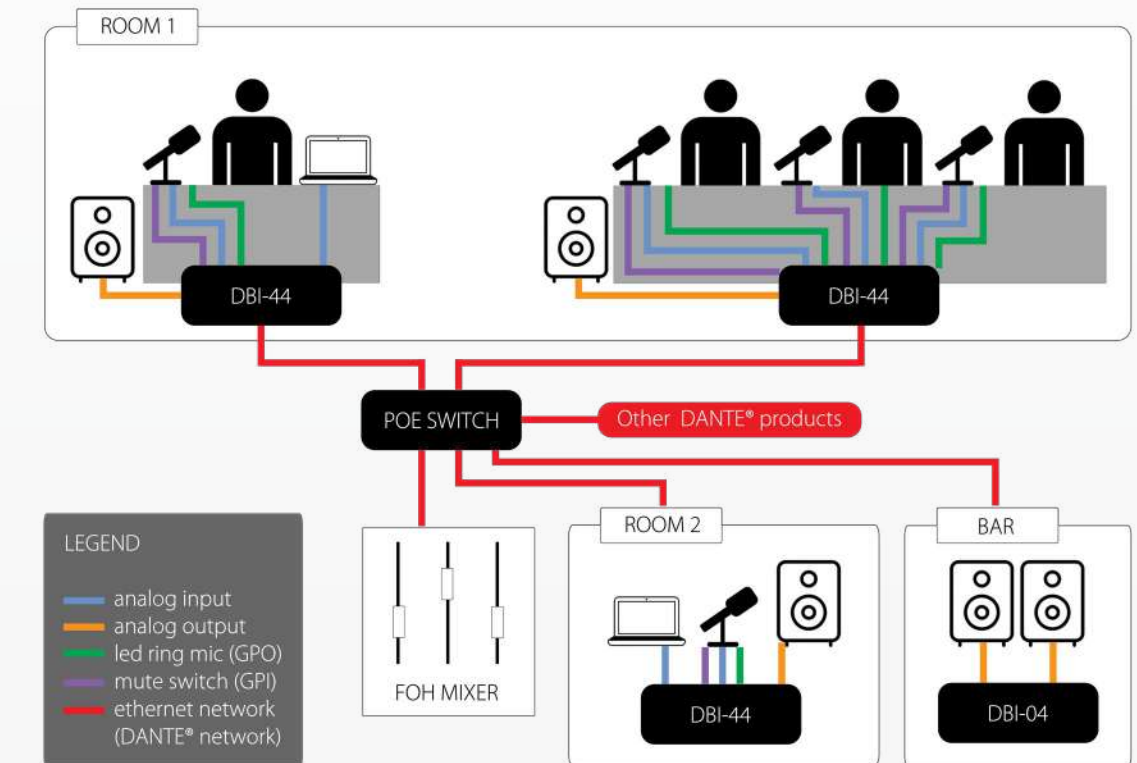
- Easy cabling :
1 single Cat5e network cable transports all audio signals in both directions. This makes it very easy to expand and modify the existing system.
- A single GPI trigger (here a potentiometer on the desk which is plugged into the DBI-44) sends a signal to the GPO connected devices (the microphones and a LED light) to turn them on and off.
- Record and play audio from and to any room on the Dante™ network.

Room 2 :

- No need for a separate mixer :
Mix all sources (microphone, audio input from a computer, the audio from the main room) using the DBI-44 its integrated webbrowser and add EQ, compression, ...
- If you need extra audio inputs just add an extra DBI-44 box.
Thanks to the DBI-44 its integrated 8x8 matrix you can easily mix up to 8 separate inputs.
- GPIO allows you to control the gain of each microphone locally.
Just connect a potentiometer to one of the GPI inputs.

Bar :

- The DBI-04 box allows the playback of audio originating from any sound source in the Dante™ network.





DBT-04

Converts DANTE® Network audio to 4 hi-grade balanced analog outputs.

GIGABIT Ethernet with Hi-speed Marvell switch

SYNQ Network Discovery Tool

Built-in DSP AUDIO PROCESSING

8x8 AUDIO MATRIX for local premix, flexible routing, ...

Integrated web server

Full OSC support

Extremely high audio quality: S/N > 120dB ~ THD: < 0.003%

Optional wall mount adapter

Optional truss mount adapter

Optional strong rubber protection adapters for use as stage box



DBT-44

Converts DANTE® Network audio to 4 hi-grade balanced analog outputs.

Converts 4 hi-grade balanced analog inputs to DANTE® Network audio.

All 4 (LINE/MIC) inputs equipped with -24dB PAD & 48V Phantom power.

GIGABIT Ethernet with Hi-speed Marvell switch

SYNQ Network Discovery Tool

Built-in DSP AUDIO PROCESSING

8x8 AUDIO MATRIX for local premix, flexible routing, ...

Integrated web server

Full OSC support

Extremely high audio quality: S/N > 120dB ~ THD: < 0.003%

Optional wall mount adapter

Optional truss mount adapter

Optional strong rubber protection adapters for use as stage box



DBI-04

Premium quality analog / Dante network audio bridge for fixed installation.

Converts DANTE® Network audio to 4 hi-grade balanced analog outputs

GPI ports: connect switches, potentiometers, control gear, alarm systems, ...

GPO: control all kinds of external gear, triggering PowerPoint presentations, ...

EUROBLOCK connectors for easy installation.

GIGABIT Ethernet with Hi-speed Marvell switch

SYNQ Network Discovery Tool

Built-in DSP AUDIO PROCESSING

8x8 AUDIO MATRIX for local premix, flexible routing, ...

Integrated web server

Full OSC support

Extremely high audio quality: S/N > 120dB ~ THD: < 0.003%

Optional wall mount adapter

Optional truss mount adapter

Optional strong rubber protection adapters for use as stage box



DBI-44

Premium quality analog / Dante network audio bridge for fixed installation.

Converts DANTE® Network audio to 4 hi-grade balanced analog outputs

Converts 4 hi-grade balanced analog inputs to DANTE® Network audio

GPI ports: connect switches, potentiometers, control gear, alarm systems, ...

GPO: control all kinds of external gear, triggering PowerPoint presentations, ...

EUROBLOCK connectors for easy installation.

GIGABIT Ethernet with Hi-speed Marvell switch

SYNQ Network Discovery Tool

Built-in DSP AUDIO PROCESSING

8x8 AUDIO MATRIX for local premix, flexible routing, ...

Integrated web server

Full OSC support

Extremely high audio quality: S/N > 120dB ~ THD: < 0.003%

Optional wall mount adapter

Optional truss mount adapter

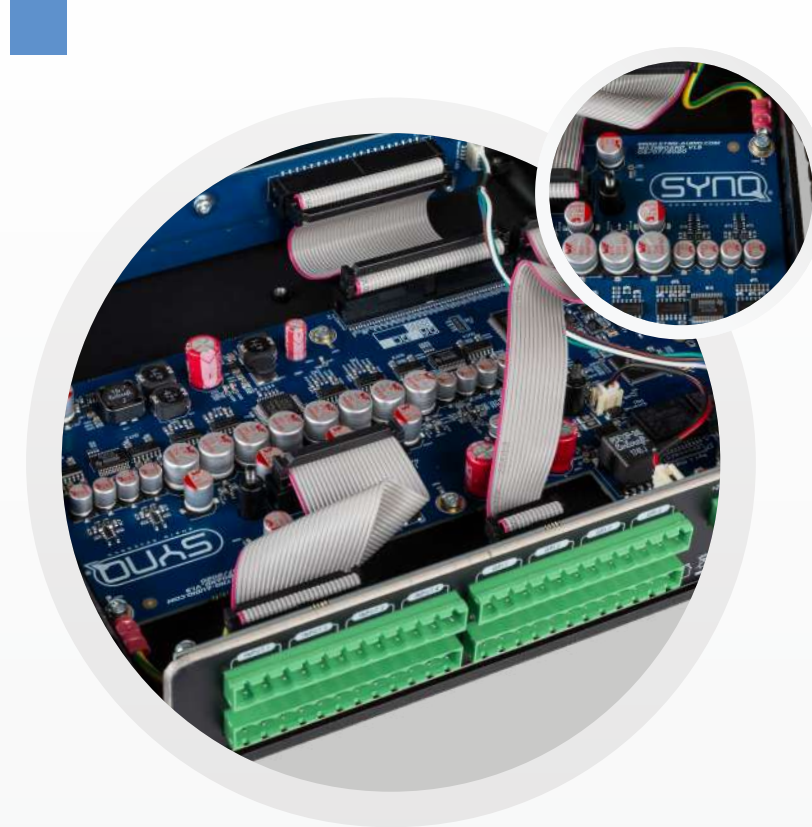
Optional strong rubber protection adapters for use as stage box



Main Features

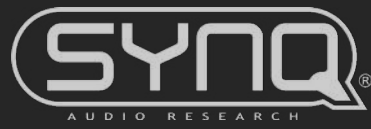
Main features of the SYNQ analog/Dante® network audio bridges

- GIGABIT Ethernet I/O based on Hi-speed Marvell switch (no linking delays)
- Built-in DSP AUDIO PROCESSING (parametric EQs, compressors, delays, ...) on all channels: perfect for use as DANTE enabled speaker management processor, but also deployable in many other applications
- 8x8 AUDIO MATRIX for local premix, flexible routing, ...
- Integrated WEB SERVER: fully graphical and very user-friendly user interface for easy configuration and DSP control on any network device!
- The included "SYNQ Network Discovery Tool" software makes it extremely easy to find the device(s) on a local network and open them on any desktop computer, without any knowledge of the IP-address
- Support for the OSC protocol: all functions can be controlled by user-created apps running on iPhones, Android phones, Tablets and desktop computers
- Extremely high audio quality: S/N > 120dB ~ THD: < 0.003%
- Complies with IEEE 802.3-2005 standard for Information Technology
- Extreme reliability, thanks to the exclusive use of industrial-grade components, such as: high-end Burr Brown audio DACs, AKM ADCs, Wurth electrolytic capacitors, ...
- HOUSING: ½ 19" diecast housing with different installation options:
 - 1 unit fits in a 1U 19" rack (19" adapter optional)
 - 2 units fit together in a 1U 19" rack (adapters included)
 - Easy wall mounting with optional wall mount adapter
 - Easy truss mounting with optional truss mount adapter



Technical Details

Power touring versions:	AC100-240V, 50/60Hz
Power fixed intall versions:	External 24Vdc input
Power consumption:	12W
PoE:	802.3af PoE-standard 57V / 0,35A maximum)
Frequency response:	20-20.000Hz (+/- 1dB)
Input s/n ratio:	117dB
Output s/n ratio:	120dB
THD+N:	<0.003% @ 1kHz, 0dB
A/D Resolution:	24 bits
Sampling frequency:	48 kHz
Max. input level:	max. +20dBu
Max. output level:	max. +20dBu (@ 0dBfs)
PAD:	-20dB
Ethernet connections:	2x Neutrik RJ45 Ethercon (Gigabit)
Size:	222 x 44 x 205 mm (19"/1U)
Weight:	1.40 kg



www.synq-audio.com